

# Contamac<sup>TM</sup>

## LARGE DIAMETER MATERIAL GUIDE

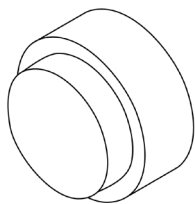


# A RANGE OF DESIGNS TO SUIT YOUR SCLERAL LENS PARAMETERS

Our large diameter blanks are available in a range of diameters and material variations to support your scleral lens manufacturing.

Find the large diameter blank to help optimise your manufacturing process.

LD 01

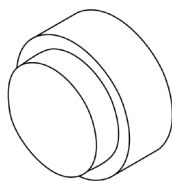


Ø 16mm

Height	9mm
Pre-Cut	No
Step	Yes
Shoulder	Square

[CLICK FOR MORE](#)

LD 20

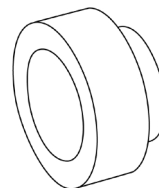


Ø 17mm

Height	9.5mm
Pre-Cut	No
Step	Yes
Shoulder	Square

[CLICK FOR MORE](#)

LD 23

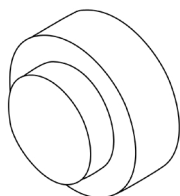


Ø 17mm

Height	9.5mm
Pre-Cut	Yes
Step	Yes
Shoulder	Square

[CLICK FOR MORE](#)

LD 02

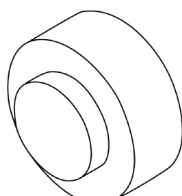


Ø 19mm

Height	10mm
Pre-Cut	No
Step	Yes
Shoulder	Square

[CLICK FOR MORE](#)

LD 03



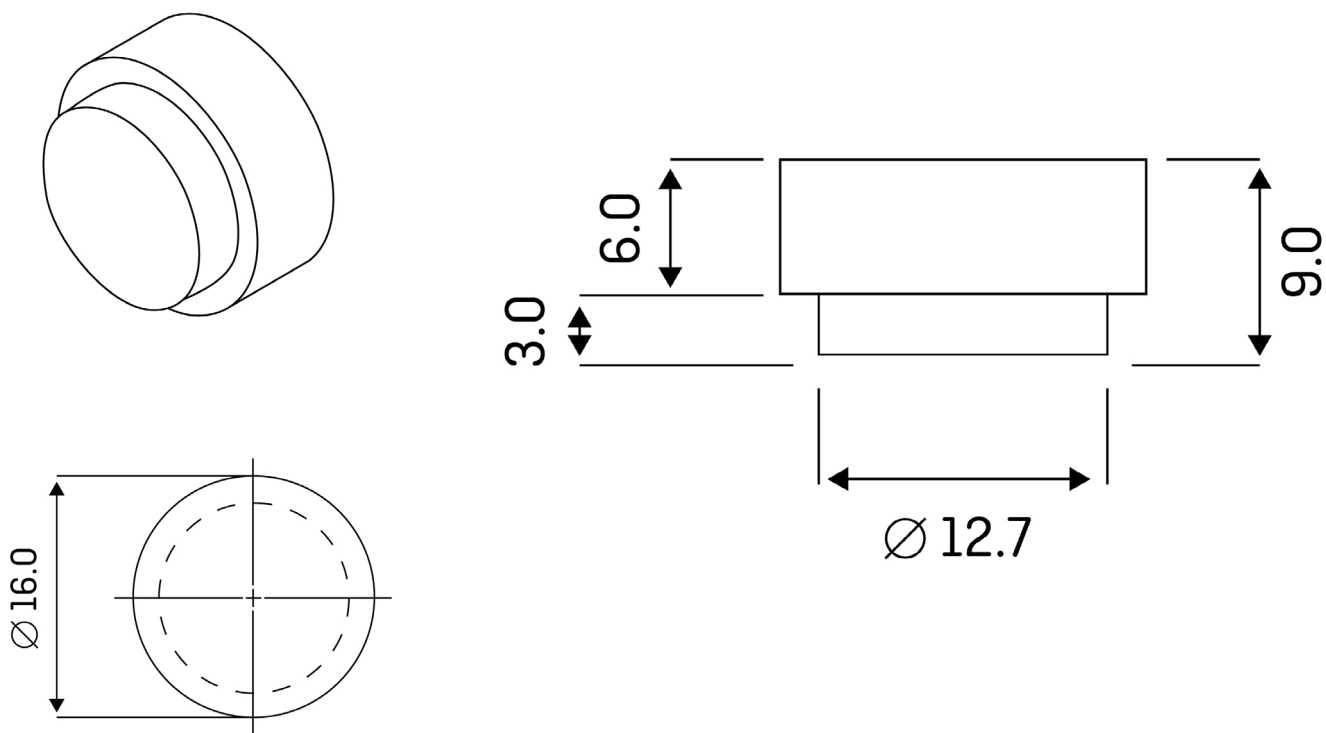
Ø 21mm

Height	11mm
Pre-Cut	No
Step	Yes
Shoulder	Square

[CLICK FOR MORE](#)

We provide an  
extended range of  
pre-cut designs

For more information  
please discuss with your  
Account Manager



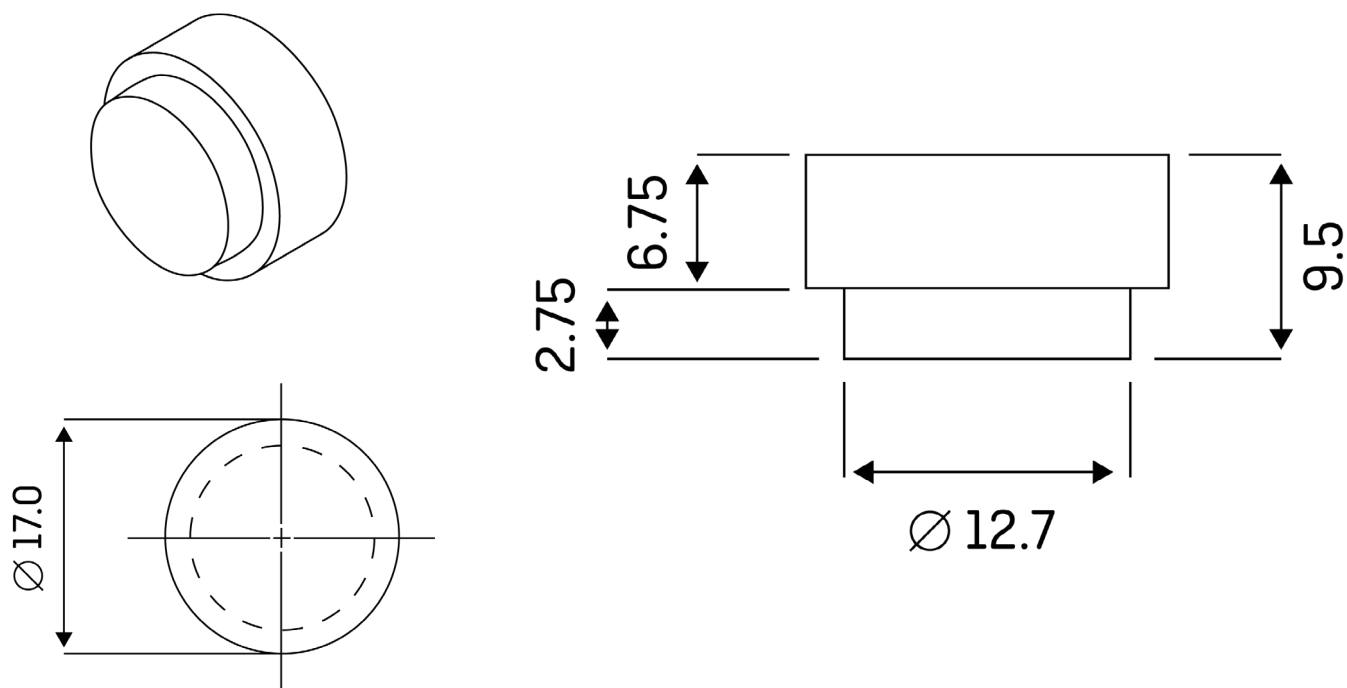
## Ø 16mm

Height	9mm
Pre-Cut	No
Step	Yes
Shoulder	Square
UV	Available
Drawing Code	LD 01

Material	Handling Tints
<b>OPTIMUM</b> EXTRA	Clear UV
	Light Blue UV

Subject to availability, MOQs may apply – for more information, including tolerances, please discuss with your Account Manager

[Back to Design List](#)



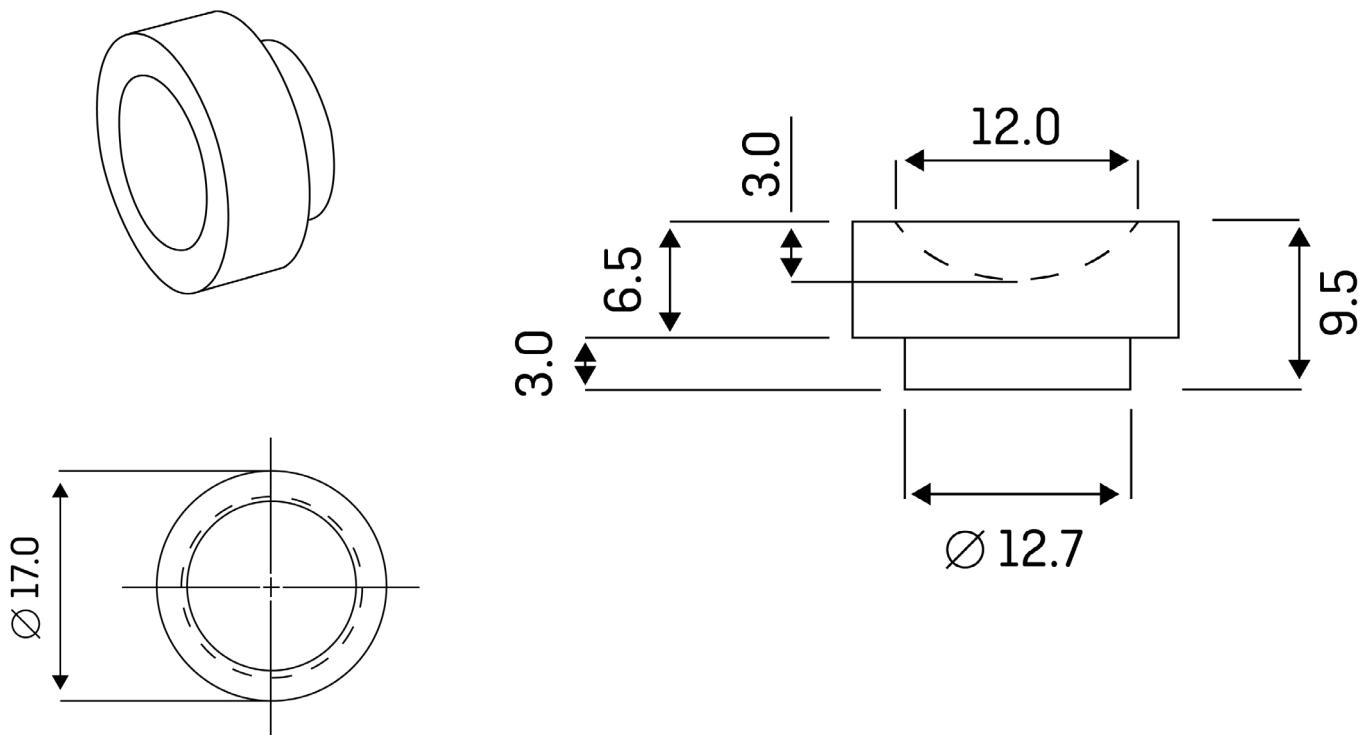
## Ø 17mm

Height	9.5mm
Pre-Cut	No
Step	Yes
Shoulder	Square
UV	Available
Drawing Code	LD 20

Material	Handling Tints
<b>OPTIMUM</b> EXTRA	Clear Clear UV Light Blue UV
<b>OPTIMUM</b> EXTREME	Clear UV Light Blue UV
<b>OPTIMUM</b> INFINITE	Clear UV Ice Blue UV
<b>HEXA100</b>	Clear UV Ice Blue UV

Subject to availability, MOQs may apply – for more information, including tolerances, please discuss with your Account Manager

[Back to Design List](#)



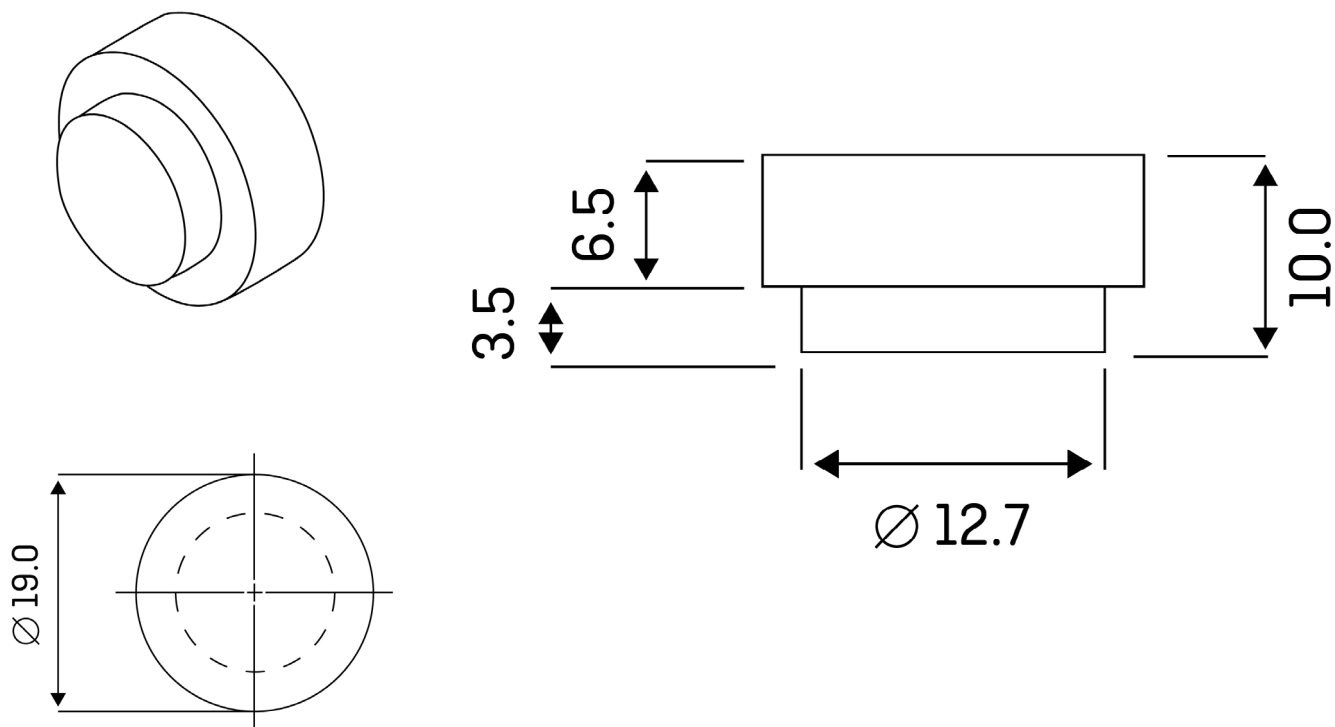
## Ø 17mm

Height	9.5mm
Pre-Cut	Yes
Step	Yes
Shoulder	Square
UV	Available
Drawing Code	LD 23

Material	Handling Tints
<b>OPTIMUM</b> EXTRA	Clear UV
	Light Blue UV
	Red
<b>OPTIMUM</b> EXTREME	Clear
	Clear UV
	Light Blue UV
<b>OPTIMUM</b> INFINITE	Clear UV

Subject to availability, MOQs may apply – for more information, including tolerances, please discuss with your Account Manager

[Back to Design List](#)



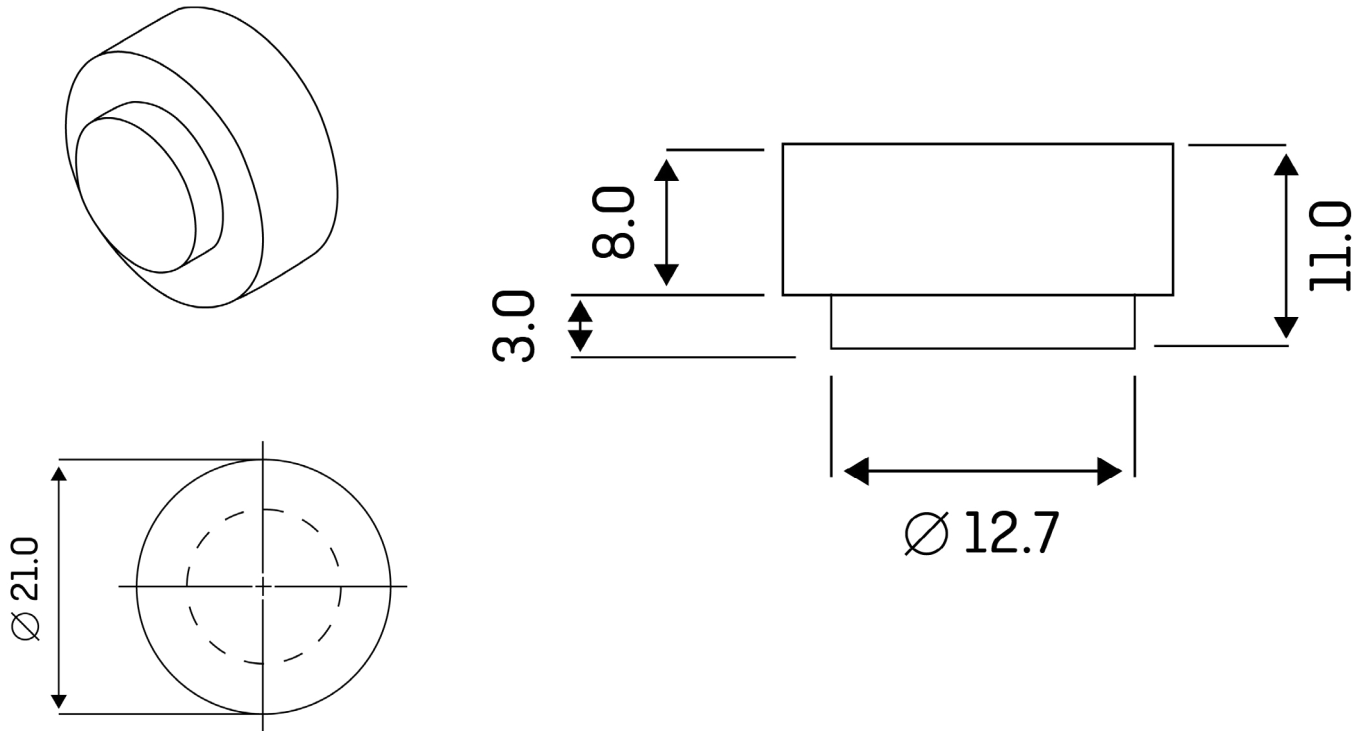
## Ø 19mm

Height	10mm
Pre-Cut	No
Step	Yes
Shoulder	Square
UV	Available
Drawing Code	LD 02

Material	Handling Tints	
<b>OPTIMUM</b> EXTRA	Clear	Light Blue
	Clear UV	Light Blue UV
<b>OPTIMUM</b> EXTREME	Clear UV	Light Blue UV
<b>OPTIMUM</b> INFINITE	Clear UV	
	Ice Blue UV	

Subject to availability, MOQs may apply – for more information, including tolerances, please discuss with your Account Manager

[Back to Design List](#)



## Ø 21mm

Height	11mm
Pre-Cut	No
Step	Yes
Shoulder	Square
UV	Available
Drawing Code	LD 03

Material Handling Tints

**OPTIMUM**  
EXTRA

Clear UV

**OPTIMUM**  
EXTREME

Clear UV

**OPTIMUM**  
INFINITE

Clear UV

Subject to availability, MOQs may apply – for more information, including tolerances, please discuss with your Account Manager

[Back to Design List](#)